

## Driving Theory for Belgium Made Simple



# Driving Theory for Belgium Made Simple

A Complete Guide for Passing the Theory Exam

Anjum Pasha

Despite the care and attention given to the compilation of this book, both the authors and the publisher disclaim any responsibility for damages that may have resulted from any errors (if at all).that might have crept into this book.

No part of this publication may be reproduced and/or copied in print, photocopy, or any other means without the written permission of the publisher.

No part of this publication may be reproduced, distributed, or transmitted in any form or by any means, including photocopying, recording, or other electronic or mechanical methods, without the prior written permission of the author, except in the case of brief quotations embodied in critical reviews and certain other non-commercial uses permitted by copyright law.

For regulations related to Belgium roads refer to the <https://www.wegcode.be/>

Edition 2024

ISBN: 979-8386464042

Published by Anjum Pasha

<https://www.drivingtheory.be/>

[info@drivingtheory.be](mailto:info@drivingtheory.be)

# Contents

- Foreword ..... 21
- How do I use this book? ..... 23
- Frequently Asked Questions..... 25
- 1. Introduction to traffic boards ..... 30
  - 1.1. General rules..... 30
    - General rules for traffic boards: ..... 30
    - Exceptions to general rules: ..... 33
  - 1.2. Warning boards ..... 33
  - 1.3. Priority boards ..... 34
  - 1.4. Obligatory boards ..... 35
  - 1.5. Prohibition boards ..... 36
  - 1.6. Parking boards ..... 36
  - 1.7. Information boards..... 37
  - 1.8. Under plates ..... 38
  - 1.9. Traffic boards summary ..... 39
- Practice questions..... 40
- Answers and explanation ..... 44
- 2. Priority ..... 46
  - 2.1. Hierarchy of priority ..... 46
  - 2.2. Priority 1 - Authorized persons..... 46
    - Who are authorized persons? ..... 46
    - Directions from authorized person ..... 47
  - 2.3. Priority 2 - Traffic lights ..... 49
    - Regular traffic lights (round shaped)..... 50
    - Evacuation light on the left..... 53
    - Bicycle lights ..... 53
    - Pedestrian lights ..... 54
    - Tram and bus lights..... 55

- Level-crossing lights..... 56
- 2.4. Priority 3 - Traffic boards and road markings..... 56
  - Traffic boards..... 57
  - Road markings ..... 57
  - Bicycle lane and pedestrian crossing..... 57
  - Stopping space for bicycles and mopeds..... 58
  - Pre-sorting lanes..... 59
  - Priority road..... 60
- 2.5. Priority 4 - Traffic rules ..... 61
- 2.6. Priority from right..... 61
  - Conditions when priority of right does not apply..... 63
- 2.7. Priority traffic boards..... 64
- Practice questions..... 66
- Answer to practice questions ..... 72
- 3. Crosspoint..... 75
  - 3.1. Crossing and turning..... 75
    - Crossing of vehicles ..... 75
  - 3.2. Manoeuvres..... 76
    - What are manoeuvres? ..... 76
    - General rules during manoeuvres ..... 77
    - Turning right ..... 77
    - Turning left ..... 78
  - 3.3. Round-about..... 81
    - Entering and exiting roundabout..... 82
    - Bicycle lanes at roundabout ..... 83
  - 3.4. Crosspoint traffic boards summary ..... 85
  - Practice questions..... 85
  - Answers to practice questions..... 89
- 4. Roads ..... 92

|  |     |
|--|-----|
| 4.1. Road users .....  | 92  |
| The pedestrians .....  | 92  |
| Where can pedestrians walk?.....                                 | 92  |
| The drivers .....  | 95  |
| Driving past pedestrians .....                                   | 96  |
| Driving past cyclists.....                                       | 98  |
| Group of bicycles on the road .....                              | 100 |
| Driving past other groups .....                                  | 100 |
| Busses and passengers .....                                      | 100 |
| Priority vehicles .....  | 101 |
| 4.2. Public road .....   | 102 |
| Types of public roads.....                                       | 103 |
| Parts of public road.....  | 105 |
| Roads that converge .....  | 107 |
| Level crossing.....  | 108 |
| Road markings .....  | 109 |
| Crossing by pedestrians and bicycles .....                       | 110 |
| Reserved bus lane.....   | 112 |
| Bus lane.....  | 113 |
| Continuous white strips or checkboard white square crossing..... | 113 |
| Lane reduction arrows.....                                       | 114 |
| Position on the road .....                                       | 115 |
| Rescue lane .....  | 117 |
| Accidents on roads .....   | 118 |
| 4.3. Private roads.....  | 118 |
| Public and private terrain .....                                 | 118 |
| 4.4. Roads traffic boards.....                                   | 119 |
| Practice questions.....  | 121 |
| Answers to practice questions.....                               | 127 |

- 5. Speed and overtaking ..... 131
  - 5.1. General rules on speed ..... 131
  - 5.2. Speed limits in built-up area ..... 131
  - 5.3. Speed limits outside built-up area ..... 132
  - 5.4. Speed limits on motorway ..... 133
    - Maximum and minimum speeds on motorway ..... 134
    - Stopping on motorway ..... 135
    - Prohibitions on motorway ..... 136
    - Exit lane on motorway ..... 136
    - Rush hour lane on motorway ..... 137
  - 5.5. Speed limits on expressways ..... 138
    - Prohibitions on expressway ..... 138
  - 5.6. Speed limits in special places ..... 138
    - List of special places ..... 138
    - Zone 30 ..... 139
    - Bicycle street ..... 140
    - Reserved roads ..... 141
    - Road hump ..... 141
    - Residential area ..... 142
    - Pedestrian zone ..... 143
    - Play street ..... 144
    - School street ..... 144
  - 5.7. Overtaking ..... 145
    - General overtaking rules ..... 145
    - How to overtake? ..... 147
    - Overtaking more than one vehicle at once ..... 147
    - Double overtaking ..... 148
    - Overtaking trams ..... 148
    - What is not overtaking? ..... 149

- Overtaking prohibited..... 152
- Zipping ..... 154
- 5.8. Braking and stopping distance..... 154
- 5.9. Traffic boards related to speed and overtaking ..... 155
- Practice questions..... 157
- Answers to practice questions..... 162
- 6. Waiting and parking..... 166
  - 6.1. Terms related to waiting and parking ..... 166
    - Definitions..... 166
    - Warning indicators ..... 166
    - Traffic boards related to parking and waiting ..... 167
    - Alternate parking ..... 170
  - 6.2. Waiting and parking allowed ..... 172
    - Where is waiting and parking allowed?..... 172
    - Limited parking ..... 176
    - Blue parking disk..... 177
    - Paid parking ..... 179
    - Reserved parking places ..... 179
    - Less-abled parking ..... 179
  - 6.3. Waiting and parking prohibited..... 180
    - Waiting and parking prohibited..... 180
    - Parking prohibited but waiting allowed ..... 183
  - 6.4. Leaving a parked vehicle behind ..... 187
  - 6.5. Traffic boards summary..... 188
  - Practice questions..... 190
  - Answer to practice questions. .... 194
- 7. Technical ..... 197
  - 7.1. Road and safety ..... 197
    - Able to drive ..... 197

|   |     |
|---|-----|
| Drugs and alcohol .....                             | 197 |
| Seat belts .....                                    | 198 |
| Exceptions to wear seat belts:.....                 | 198 |
| Mandatory to keep in Light Motor Vehicle (LMV)..... | 198 |
| Placing warning triangle .....                      | 199 |
| 7.2. Technical.....                                 | 200 |
| Driving license B.....                              | 200 |
| Provisional license/learner’s license.....          | 200 |
| Documents on board .....                            | 200 |
| 7.3. Your vehicle .....                             | 201 |
| MAW and MGW.....                                    | 201 |
| Identify if the question is MAW or MGW .....        | 202 |
| Vehicle measurements .....                          | 202 |
| Dangerous goods .....                               | 203 |
| Towing .....  | 204 |
| Vehicle lights.....                                 | 205 |
| Using of vehicle lights.....                        | 206 |
| Vehicle horn.....                                   | 206 |
| Vehicle tires .....                                 | 206 |
| Braking and vehicle control .....                   | 208 |
| Cruise control.....                                 | 209 |
| 7.4. Mobility and environment.....                  | 209 |
| Low emission zone (LEZ).....                        | 210 |
| Optimize fuel consumption .....                     | 210 |
| SMOG.....   | 211 |
| 7.5. Violations and offences .....                  | 211 |
| Four level of offences .....                        | 211 |
| List of 3 <sup>rd</sup> grade offences .....        | 212 |
| Recidivism .....                                    | 213 |

7.6. Accidents..... 213

7.7. Traffic boards summary..... 214

Practice questions..... 214

Answers to practice questions..... 216

Index ..... 218



|  |    |
|--|----|
| Figure 1 Traffic boards .....  | 30 |
| Figure 2 Illustration - Boards placed on the right .....   | 31 |
| Figure 3 Traffic boards placed on left and top of lane .....   | 31 |
| Figure 4 Traffic sign on the left.....   | 32 |
| Figure 5 Examples of circular prohibition boards.....  | 32 |
| Figure 6 Obligatory boards .....   | 33 |
| Figure 7 Example of information boards .....   | 33 |
| Figure 8 Examples triangle warning boards .....  | 34 |
| Figure 9 Examples of priority boards.....  | 34 |
| Figure 10 Stop and give priority .....   | 35 |
| Figure 11 Round blue obligatory boards .....   | 35 |
| Figure 12 Prohibition board examples .....   | 36 |
| Figure 13 Parking boards .....   | 37 |
| Figure 14 Rectangular information boards.....  | 38 |
| Figure 15 Under plates .....   | 38 |
| Figure 16 This A1 warning board indicates that you are approaching a dangerous left turn. The road user must adjust his speed.....   | 39 |
| Figure 17 This A3 warning board indicates that you are approaching a dangerous downhill, the percentage on the board indicates the degree of descent .....   | 39 |
| Figure 18 This B15 traffic board is placed in the immediate vicinity of the place where the driver has priority. The horizontal line indicates the intersecting side road that should give you priority. In this case the side street comes from the right. .... | 39 |
| Figure 19 This B17 traffic board is placed in the immediate vicinity of an intersection where the priority of right applies. ....  | 39 |
| Figure 20 This D1 board is an obligation to follow the direction indicated by the arrow – at next junction to turn right compulsorily.....   | 39 |
| Figure 21 This D10 obligation board indicates the part of the public road that must be used by pedestrians and cyclists. ....  | 39 |
| Figure 22 This C5 prohibition board indicates no entry for drivers of motor vehicles with more than two wheels.....  | 39 |
| Figure 23 This E1 prohibition board indicates that you are not allowed to park here. The prohibition applies to the side of the road where it is placed, up to the next intersection. ....   | 39 |
| Figure 24 This E9 parking disc traffic board indicates that the parking time is limited and that you must place a parking disc clearly visible in your vehicle. ....   | 40 |

|   |    |
|---|----|
| Figure 25 This E9 traffic board indicates that you must park on the elevated verge or on the sidewalk. ....   | 40 |
| Figure 26 This F5 information road board indicates that this is the beginning or entrance of a motorway.....  | 40 |
| Figure 27 This F13 information traffic board shows arrows on the roadway to help you choose the right lane. ....  | 40 |
| Figure 28 This blue under plate board indicates the distance of 150 meters at which you must stop and give priority. ....   | 40 |
| Figure 29 This M17 white underplate board indicates that cyclists and speed pedelecs have an exception and are allowed to ride in two directions on the road..... | 40 |
| Figure 30 Hierarchy of priority on roads .....  | 46 |
| Figure 31 Directions from authorized person - one arm raised .....  | 47 |
| Figure 32 Directions from authorized person - arms spread horizontal .....  | 48 |
| Figure 33 Vertical movement of hand with light means stop .....   | 48 |
| Figure 34 Order of traffic light from top - Red, Orange, and Green (left is regular light and right is for trams and buses) .....                                 | 49 |
| Figure 35 Traffic lights or traffic boards only on left .....   | 49 |
| Figure 36 Red traffic light .....   | 50 |
| Figure 37 Orange traffic light.....   | 50 |
| Figure 38 Green traffic light.....  | 51 |
| Figure 39 Continuously flashing orange lights.....  | 51 |
| Figure 40 Lights in the form of arrows .....  | 52 |
| Figure 41 Turning right - give priority.....  | 52 |
| Figure 42 Evacuation light on the left.....   | 53 |
| Figure 43 Silhouette of bicycle indicating light applies to bicycles .....  | 54 |
| Figure 44 Silhouette of pedestrian indicating pedestrian light and bicycle indicating bicycle light .....   | 54 |
| Figure 45 Tram lights .....   | 55 |
| Figure 46 Tram lights and regular lights .....  | 55 |
| Figure 47 Level crossing lights .....   | 56 |
| Figure 48 Traffic sign and complementary road marking.....  | 56 |
| Figure 49 Bicycle lane .....  | 57 |
| Figure 50 footpath that is at the same level as the road .....  | 58 |
| Figure 51 Checked marking on road.....  | 58 |
| Figure 52 Stopping space for bicycles and mopeds.....   | 59 |
| Figure 53 Pre-sort lanes.....   | 59 |
| Figure 54 Begin of priority road.....   | 60 |

|   |     |
|---|-----|
| Figure 55 End of priority road.....   | 61  |
| Figure 56 Priority from right.....  | 61  |
| Figure 57 Priority from right - priority board .....                        | 62  |
| Figure 58 Trams always have priority – no priority of right here .....      | 62  |
| Figure 59 No priority for vehicle coming out of parking .....               | 63  |
| Figure 60 No priority for vehicle coming from prohibited direction.....     | 63  |
| Figure 61 Crosspoint or junction .....                                      | 75  |
| Figure 62 Crossing of vehicles.....   | 75  |
| Figure 63 Crossing on small street – use level verge.....                   | 76  |
| Figure 64 Give priority while crossing if your side or road is blocked..... | 76  |
| Figure 65 Performing manoeuvre .....  | 77  |
| Figure 66 Give priority while turning right .....                           | 78  |
| Figure 67 Car turning right.....  | 78  |
| Figure 68 Car turning left.....   | 79  |
| Figure 69 Illustration - turning left .....                                 | 79  |
| Figure 70 Give priority while turning left or right .....                   | 80  |
| Figure 71 Illustration - turn without crossing.....                         | 80  |
| Figure 72 Illustration - Cross first and then turn left.....                | 81  |
| Figure 73 Round-about.....  | 81  |
| Figure 74 Give priority at round-about.....                                 | 82  |
| Figure 75 Exiting round-about - switch on right indicator.....              | 83  |
| Figure 76 Bicycle lane part of roundabout .....                             | 83  |
| Figure 77 Bicycle lane outside round-about.....                             | 84  |
| Figure 78 The pedestrians .....   | 92  |
| Figure 79 Reserved part of road for pedestrians and bicycles.....           | 93  |
| Figure 80 Elevated verge – footpath .....                                   | 93  |
| Figure 81 Level verge.....  | 94  |
| Figure 82 Parking lane .....  | 94  |
| Figure 83 Left road shoulder for pedestrians .....                          | 95  |
| Figure 84 Walking on the road .....   | 95  |
| Figure 85 Drivers.....  | 96  |
| Figure 86 Lateral distance between bicycles and your vehicle .....          | 96  |
| Figure 87 Crossing guard and authorized person.....                         | 97  |
| Figure 88 Road captain wearing arm band and carrying C3 sign .....          | 98  |
| Figure 89 Bicycles within built-up area.....                                | 99  |
| Figure 90 Bicycles outside built-up area.....                               | 100 |
| Figure 91 Public bus exiting bus stop .....                                 | 101 |
| Figure 92 School bus.....   | 101 |

|  |     |
|--|-----|
| Figure 93 Priority vehicle with flashing light and siren.....                                      | 102 |
| Figure 94 Public road .....  | 102 |
| Figure 95 Street example – shopping street.....  | 103 |
| Figure 96 Path.....  | 103 |
| Figure 97 Begin of built-up area – speed from here is 50 kms/hr (in Brussels it is 30 kms/hr)..... | 104 |
| Figure 98 Speed outside built-up area .....  | 105 |
| Figure 99 Parts of public road.....  | 105 |
| Figure 100 Orange road marking.....  | 106 |
| Figure 101 Hard shoulder .....   | 106 |
| Figure 102 Suggestion lane.....  | 107 |
| Figure 103 Traffic island .....  | 107 |
| Figure 104 Road junctions .....  | 108 |
| Figure 105 Level crossing with barrier.....  | 108 |
| Figure 106 Level crossing without barrier .....  | 109 |
| Figure 107 Imaginary edge on the road .....  | 110 |
| Figure 108 Broken alternate orange and black strips.....   | 110 |
| Figure 109 Pedestrian crossing.....  | 111 |
| Figure 110 Pedestrian crossing.....  | 111 |
| Figure 111 Bicycle crossing.....   | 112 |
| Figure 112 Reserved bus lane.....  | 113 |
| Figure 113 Checkmarks on the roads .....   | 114 |
| Figure 114 Lane reduction.....   | 115 |
| Figure 115 Driving close to the edge of right lane.....  | 115 |
| Figure 116 Drive on right lane .....   | 116 |
| Figure 117 Choosing lane in built-up area.....   | 116 |
| Figure 118 Pre-sort lane .....   | 117 |
| Figure 119 Lane open and closed for traffic.....   | 117 |
| Figure 120 Rescue lane .....   | 118 |
| Figure 121 Public terrain .....  | 119 |
| Figure 122 Private terrain.....  | 119 |
| Figure 123 Adapt speed based on road conditions .....  | 131 |
| Figure 124 Maximum speed limit on vehicle.....   | 131 |
| Figure 125 Speed limit within built-up area .....  | 132 |
| Figure 126 Speed limit outside built-up area .....   | 133 |
| Figure 127 Speed limit on 2x2 road with central verge.....   | 133 |
| Figure 128 Begin of motorway .....   | 134 |
| Figure 129 Dynamic board reducing the speed on motorway .....                                      | 135 |

|  |     |
|--|-----|
| Figure 130 Hard shoulder on motorway .....   | 136 |
| Figure 131 Speed limit on exit lane .....  | 137 |
| Figure 132 Rush hour lane.....   | 137 |
| Figure 133 Speed on expressway .....   | 138 |
| Figure 134 Begin and end of zone 30 .....  | 139 |
| Figure 135 Dynamic traffic sign - end of zone 30 .....                                 | 139 |
| Figure 136 Start and end of bicycle street.....  | 140 |
| Figure 137 Bicycle street .....  | 141 |
| Figure 138 Reserved roads .....  | 141 |
| Figure 139 Road hump .....   | 142 |
| Figure 140 End of residential area.....  | 143 |
| Figure 141 Pedestrian zone .....   | 144 |
| Figure 142 School street.....  | 145 |
| Figure 143 Illustration - overtaking from left .....                                   | 145 |
| Figure 144 Overtaking tram from right .....  | 146 |
| Figure 145 Illustration - overtaking from right.....                                   | 146 |
| Figure 146 How to perform overtaking.....  | 147 |
| Figure 147 Illustration - overtaking more than one vehicle at once .....               | 148 |
| Figure 148 Illustration - double overtaking .....                                      | 148 |
| Figure 149 Overtaking tram from right .....  | 149 |
| Figure 150 Vehicles on different roads is not considered overtaking.....               | 150 |
| Figure 151 Not overtaking when you pass vehicles that are standing in traffic jam..... | 150 |
| Figure 152 Select lane of your choice within built-up area.....                        | 151 |
| Figure 153 Motorbikes riding between lanes.....  | 151 |
| Figure 154 Illustration - no overtaking traffic sign .....                             | 152 |
| Figure 155 Illustration - overtaking prohibition - continuous line .....               | 153 |
| Figure 156 Overtaking at junction .....  | 153 |
| Figure 157 Perform correct zipping.....  | 154 |
| Figure 158 Illustration stopping distance .....  | 154 |
| Figure 159 Stopping distance .....   | 155 |
| Figure 160 Parking, waiting, and stopping .....  | 166 |
| Figure 161 Parking with warning lights – offence .....                                 | 167 |
| Figure 162 Parking reserved for certain category of vehicles .....                     | 167 |
| Figure 163 Parking fully on verge .....  | 168 |
| Figure 164 Parking partly on verge and partly on road.....                             | 168 |
| Figure 165 Waiting and parking prohibited.....   | 169 |
| Figure 166 End of waiting and parking prohibition .....                                | 170 |

|  |     |
|--|-----|
| Figure 167 Alternate parking .....   | 171 |
| Figure 168 Alternate parking .....   | 172 |
| Figure 169 Parking on level verge within built-up area .....                                     | 173 |
| Figure 170 Parking on the verge outside built-up area .....                                      | 173 |
| Figure 171 Leave at-least 1.5 m free for use by pedestrians .....                                | 174 |
| Figure 172 Parking fully on road, partially on road, and fully on verge .....                    | 174 |
| Figure 173 Parking on road that is not split into lanes .....                                    | 175 |
| Figure 174 Parking on both sides of road in one-way street .....                                 | 175 |
| Figure 175 Parking in residential areas .....  | 176 |
| Figure 176 Parking automat .....   | 176 |
| Figure 177 Parking with parking disk .....   | 177 |
| Figure 178 Setting the blue parking disk .....   | 178 |
| Figure 179 Blue parking disk other restrictions .....  | 178 |
| Figure 180 Residents card .....  | 179 |
| Figure 181 Less-abled parking .....  | 180 |
| Figure 182 Traffic island .....  | 180 |
| Figure 183 Parking prohibited on bicycle lane .....  | 181 |
| Figure 184 Parking prohibited 5 meters before end of bicycle lane .....                          | 181 |
| Figure 185 Parking at pedestrian crossing .....  | 182 |
| Figure 186 Parking prohibited under bridge and tunnel .....                                      | 182 |
| Figure 187 Parking prohibitions at junctions .....   | 183 |
| Figure 188 Parking prohibited at entrance to private property .....                              | 183 |
| Figure 189 Parking - maintain 1 meter distance between cars .....                                | 184 |
| Figure 190 Parking prohibited at bus stop .....  | 184 |
| Figure 191 Parking on road with and without lanes .....  | 185 |
| Figure 192 Prohibited parking with alternate orange markings on the edge<br>.....                | 185 |
| Figure 193 Parking prohibition on narrow roads .....   | 186 |
| Figure 194 Parking prohibited outside built-up area on priority road .....                       | 186 |
| Figure 195 Parking prohibited on the central verge and left lanes outside<br>built-up area ..... | 187 |
| Figure 196 Alcohol test .....  | 197 |
| Figure 197 Mandatory items in a vehicle .....  | 198 |
| Figure 198 Warning triangle behind vehicle .....   | 199 |
| Figure 199 Vehicle documents on-board .....  | 201 |
| Figure 200 Maximum gross weight .....  | 201 |
| Figure 201 POCS for MAW .....  | 202 |
| Figure 202 MGW .....   | 202 |

Figure 203 Vehicle measurements ..... 203  
Figure 204 Load protruding on the rear ..... 203  
Figure 205 Dangerous goods ..... 204  
Figure 206 Prohibition dangerous goods ..... 204  
Figure 207 Towing ..... 205  
Figure 208 Vehicle rear lights ..... 205  
Figure 209 Vehicle front lights..... 206  
Figure 210 Tyre grooves ..... 207  
Figure 211 Worn-out tyres ..... 207  
Figure 212 Tyre pressure ..... 208  
Figure 213 Brake fluid reservoir ..... 208  
Figure 214 Electrical stability program switch..... 209  
Figure 215 Cruise control switch ..... 209  
Figure 216 LEZ..... 210  
Figure 217 SMOG..... 211



## Foreword

---

### Foreword

First and foremost, I would like to express my heartfelt gratitude to The Almighty who gave me the strength, knowledge, and understanding to complete this book with my best possible abilities and offer the learners the best and simplest content. I would also like to thank my parents for their sacrifices, without which I would not have been capable of what I am today. My wife and kids played a crucial role in giving me excellent support, space, and time to focus on this book and complete it as planned. Their trust in me kept me moving forward.

After the success of the first edition, I am now releasing the updated 2024 edition with new content and numerous practice questions to enhance your understanding of the concepts. The first edition was a great success, helping many grasp the driving fundamentals and pass the theory exams easily.

I have based this book on the official website of the Belgian federal government, [wegcode.be](https://wegcode.be). This website provides information on traffic regulations, road safety, and related matters. It serves as a reference for road users, including drivers, cyclists, and pedestrians, to understand and comply with the traffic rules in Belgium.

This book covers all the key topics that you will need to know to pass the theory test, and I have taken great care to ensure that the book is user-friendly, using clear and concise language and illustrations to explain key concepts. I have also kept in mind the non-native English-speaking audience who may struggle to understand the rules and regulations due to the constraints of the Dutch and French languages.

Driving Theory for Belgium Made Simple – Edition 2024 is designed to help you prepare for the driving theory test with confidence. In addition to covering the key topics of the theory test, this book also includes helpful tips and advice for test-taking, as well as practice questions and answers to help you prepare for the actual exam.

I hope that you find Driving Theory for Belgium Made Simple to be a valuable and informative resource as you prepare for your driving theory test, and that it helps you become a safe and confident driver on the roads of Belgium. With this book, I am confident that you will be well-prepared to pass the theory test and obtain your driving license.

As a final note, I would like to invite you to check out our website <https://www.drivingtheory.be/>. Thank you!



---

## How do I use this book?

---

### How do I use this book?

This book is designed to serve as your comprehensive guide for preparing for the Category B driving license theory exam. To maximize the utility of this resource, we've included a guide on how to effectively utilize this book. However, please note that this is merely a recommendation, and you are free to navigate the book as you find it most beneficial. There's no requirement to begin from the very beginning and proceed to the end.

#### **Table of Contents and Table of Figures**

Before delving into the content, familiarize yourself with the Table of Contents (TOC) to get an overview of the book's structure and the topics covered in each chapter. The TOC will help you locate specific information quickly and efficiently.

The Table of Figures is your reference for visual aids and illustrations used throughout the book. It provides a visual summary of the key traffic situations and road signs you'll encounter in the text.

#### **Frequently Asked Questions**

Before diving into the chapters, take a moment to explore the Frequently Asked Questions (FAQs) section. Here, you'll find answers to common queries about the theory exam and the Belgian driver's license process, among others.

#### **Chapters**

This book is divided into seven chapters, each dedicated to a specific aspect of driving theory. Each chapter provides a clear explanation of topics, emphasizing the fundamental rules, and is enriched with photographs depicting real-life situations. For more intricate subjects, we have included illustrations to simplify complexity and convey explanations in simple terms.

#### **Practice Exam Questions**

In addition to the quiz questions at the end of each chapter, you can practice more questions through our website <https://www.drivingtheory.be/>

### **Index**

The Index at the end of the book allows you to quickly find specific topics based on keywords. This tool is handy for referencing specific information or revisiting particular concepts.

By following this guide and actively engaging with the content, you'll be well-prepared to pass the Belgian driving theory exam.

## Frequently Asked Questions

---

### Frequently Asked Questions

1. Where can I practice quiz questions in English?

You can do that through the website <https://www.drivingtheory.be/>

2. What is required to drive a car in Belgium?

To drive a car in Belgium, you need a category B driver's license (rijbewijs B). For this you must pass a theory exam and a practical exam.

3. What are the age requirements for writing the theory exam?

You can write the theory exam starting from the age of 17.

4. Is it possible to get a driving license before the age of 18?

No, the minimum age for obtaining a driving license in Belgium is 18 years.

5. What are the conditions to obtain a Belgian driver's license (rijbewijs B)?

You can obtain a Belgian driver's license if you satisfy any of the following three conditions:

- You are a Belgian citizen, foreigner but Belgian resident, or you have registered at one of the Belgium municipalities (gemeente) and you are living in Belgium.
- You are enrolled into Belgian educational institution for a period of at least 6 months.
- You are holder of one of the following valid documents issued in Belgium: diplomatic identity card, consular identity card, or special identity card.

6. How many times am I allowed to attend the theory exam if I fail the theory exam?

You are allowed once to fail the theory exam. If you fail after the second attempt, then you must complete 12 hours of theory lessons at a certified school before attempting the theory exam again.

7. Can I take theory exams for driving licenses in French, German, or English in Belgium?

Yes, starting from January 1, 2023, theory exams for driving license categories AM, A, B, O, D, and G can be taken with audio translation in French, German, or English.

## Driving Theory for Belgium Made Simple

---

8. How much does a theory exam for category B driver's license cost?

THEORY EXAMINATION DRIVING LICENSE cat. AM, A, B, and G costs €18.00

Additional fee for a theory examination with audio translation cat. AM, A, B, and G €40.00

9. Where can I find list of recognized driving schools for theory and practice?

You can find the list of recognized driving schools from this website

<https://www.mijnrijbewijsb.be/studeren/zoek-een-rijschool/>

10. Do I need to make an appointment in advance to take the theory exam?

You should check with your chosen exam center's website to see if you need to make an appointment in advance, which can often be done online. If in Flanders you can use the site to make your appointment

<https://examencentrum.autoveiligheid.be/>

11. What documents do I need to bring to the theory exam?

- You must bring your Belgium identity card (in original) or your residence card (in original). A copy is not accepted.

- If you have lost your identity card, bring the official proof of loss or theft.

12. What does the theory exam consist of?

- The theory exam consists of 50 multiple-choice questions. To pass, you must score at least 41 out of 50.

- You start with 50 points and lose 1 point for each incorrect answer or unanswered question.

- You lose 5 points for each mistake related to questions about 3<sup>rd</sup> and 4<sup>th</sup> grade offence and also related to speed limits.

13. How does the theory exam process work?

- The questions are presented on a computer screen and closely resemble real traffic situations.

- You have 15 seconds to answer each question after it is fully read out.

- At the end of the exam before you exit the exam you can review your incorrect answers. It is not possible to review the incorrect answers after you have exited the exam.

14. Is there a delayed theory exam option?

---

## Frequently Asked Questions

---

- Yes, candidates with learning disabilities (such as dyslexia) or those who are illiterate can request a delayed exam, where questions are read out by an examiner, and candidates have more time to answer.

15. Can I request a delayed theory exam after failing five times without a certificate or attestation?

Yes, if you have failed the theory exam five times, you can request a delayed exam without needing a certificate or attestation.

16. How can I schedule a special theory examination (theory exam with extended time or for the hearing-impaired) in Flanders?

- To schedule a special theory examination follow these steps:

- Send an email to the address [theorie@autoveiligheid.be](mailto:theorie@autoveiligheid.be) .

- Include your name, first name, address, national identification number, phone number, the category of the driving license, your chosen examination centre, and the first available date that suits you.

- You should also bring the necessary certificate of eligibility to write these exams.

17. Who are eligible to write theory exam with extended time?

Candidates who can apply and get one of the following certificates are eligible to write theory exam with extended time:

- centrum voor beroepsoriëntering
- CLB (Centrum voor Leerlingenbegeleiding)
- instituut voor buitengewoon onderwijs
- centrum voor observatie of begeleiding
- OCMW

18. How can I make an appointment for a theory exam with audio translation?

A: You can schedule an appointment for theory exams exclusively online via the Autoveiligheid website at <https://www.autoveiligheid.be/afspraak-examen-rijbewijs>

19. How do I indicate the language (French, German, or English) that I want to give the theory exam in?

A: You must book your exam via the link already shared and when you arrive at the exam center, immediately inform them that you wish to take the exam in either French, German, or English.

20. After passing theory exam, what options do I have to practice for practical exam?

A: After passing the theoretical driving exam, you receive an attestation to apply for a provisional learner's permit. You must practice for a minimum of 3 months. You have two options:

## Driving Theory for Belgium Made Simple

---

- Learner's permit B without a supervisor (valid for 18 months): If you are 18 years or older and have completed 20 hours of driving lessons, you can practice without a supervisor.

- Learner's permit B with a supervisor (valid for 36 months): From the age of 17, you can choose a learner's permit with a supervisor. You can select up to two supervisors, and you must always drive with the supervisor you have selected and registered on your permit.



### 1. Introduction to traffic boards

#### 1.1. General rules

- Always pay attention and follow the traffic boards.
- Traffic boards are of following six categories:
  1. Warning boards
  2. Priority boards
  3. Obligatory boards
  4. Prohibitor boards
  5. Parking boards
  6. Information boards



Figure 1 Traffic boards

#### General rules for traffic boards:

- Traffic signs/traffic boards are usually placed on the right (sometimes above the lanes, for example on motorways).
- In Belgium traffic signs are placed on the right because vehicles drive on the right-hand side of the road.

## Introduction to traffic boards

---

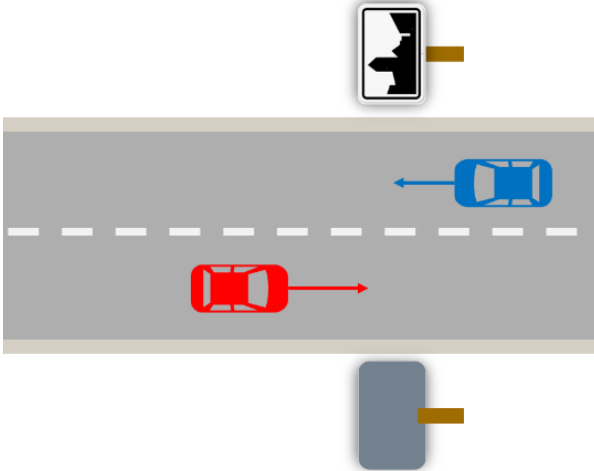


Figure 2 Illustration - Boards placed on the right



Figure 3 Traffic boards placed on left and top of lane

- Above we see two examples where the traffic boards are repeated on the left and on the top lane. The photo on the left shows speed limit board placed on right and left and the photo on the right shows the information boards placed on the top of the lane.
- It is important to note that if there is no traffic board to your right then the regulation does not apply for you.



Figure 4 Traffic sign on the left

- In the example above, the speed prohibition board placed on the left does not apply to you or the vehicle in front of you as there is no such board for you on the right. So, you must continue to drive with the speed limit that is already imposed on the road you are driving – it could be for example 70 kms/hr.
- Circular board with red border indicates mostly prohibitions. For example: speed limit sign, entry prohibition sign, prohibition to turn right or left.



Figure 5 Examples of circular prohibition boards

- In the examples above, the left photo prohibits you from entering the road that is on your right and the right photo prohibits you from entering the road on which the traffic sign is placed. We will talk about these boards and more in detail in later lessons.
- Blue circular board indicates obligation (some instruction that should be followed).
- The obligatory boards are placed where they are best visible – it could be on the right, left or centre.

## Introduction to traffic boards



Figure 6 Obligatory boards

- In the example, we see two obligatory blue boards - the left photo indicates compulsory keep right when you are driving here and the right photo indicates compulsory left turn for vehicles from here.
- Rectangular blue boards are usually helpful information boards. You may follow or ignore them depending on your situation.



Figure 7 Example of information boards

- The examples above show two rectangular blue information boards. The left board is helpful information if you want to take this exit, the board on the right photo is helpful information indicating that this is a one-way street.

### Exceptions to general rules:

- Obligatory boards may be placed where they are best visible (on the right, on the left, in the middle of the road).
- In the next section, we will see how to identify these different boards.

### 1.2. Warning boards

- Indicates danger situation to pay attention to.
- These are usually triangle shaped with red border.
- Placed usually at 150 meters before the actual place of danger (unless indicated by a blue plate below the board).

## Driving Theory for Belgium Made Simple



Figure 8 Examples triangle warning boards

- The examples above, indicate triangle warning boards, the board on the left indicates possible children present at 150 meters – so pay close attention and drive carefully. The photo on the right indicates slippery road – so you must adapt your speed accordingly.


### 1.3. Priority boards

- Priority boards indicate who has priority at the next junction.
- These boards look like warning boards (triangle shaped boards with red border) but indicate who has priority at the next junction or cross point.
- These are placed before the junction where it applies.



Figure 9 Examples of priority boards

- The example shows priority boards. Note that, it can be, as in the left photo, a triangle with marking indicating the main road and side road, or it can also be an inverted triangle as in photo on the right.
- An inverted triangle is also referred to as shark teeth.

- In addition to the triangle and inverted triangle a stop traffic board  is also a priority board which looks very different – like a hexagon (six-sided figure).
- At a stop board, you must stop and give priority to other vehicles.
- You must stop before the continuous white line on the road next to the traffic board.

## Introduction to traffic boards



Figure 10 Stop and give priority

- In the example, notice the two black cars stopping at the stop board and letting the grey car coming from left go first.

### 1.4. Obligatory boards

- These traffic boards must be compulsorily followed.
- These are usually blue round boards.

---

*Remember – a round board is important to pay attention to. It is usually prohibitive (with red border) or obligatory (a blue board)*

---

- Obligatory boards may be placed where they are best visible.



Figure 11 Round blue obligatory boards

- In the example, we see two photos with obligatory boards, the left photo has obligatory board placed on the left side of the road for better visibility. The photo on the right shows the obligatory board placed on the right side of the road indicating the two directions allowed for the drivers to take at the next junction.

---

## Driving Theory for Belgium Made Simple

---

### 1.5. Prohibition boards

- These boards indicate prohibitions (things that are not allowed).
- These are usually round boards with red border or full red boards or red border boards with blue background.
- Example of prohibition boards can be – prohibition to enter a street, prohibition to overtake vehicles, prohibition to exceed a certain speed limit.
- The prohibitions remain in effect until the next junction, another new prohibition board is encountered, or a prohibition cancel board is reached.

---

*Remember – a round board is important to pay attention to. It is usually prohibition (with red border) or obligation (a blue board).*

---



Figure 12 Prohibition board examples

- In the example, the left photo shows prohibition to turn right and the right picture shows prohibition to enter this street in both directions. Note that these are both round boards with red border.

### 1.6. Parking boards

- These boards indicate where parking is allowed and for whom parking is allowed.
- These are usually rectangular blue boards.

---

## Introduction to traffic boards

---

*Remember – a rectangular blue board is more for useful information. You may or may not use the information on the board.*

---



Figure 13 Parking boards

- In the example above, we see two parking boards, the board on the left indicates parking allowed for maximum 30 minutes and vehicle parked must be fully on the verge. The photo on the right indicates parking reserved for less abled drivers.

### 1.7. Information boards

- These boards provide useful information.
- These are usually rectangular blue boards.

---

*Remember – a rectangular board is more for useful information. You may or may not use the information on the board.*

---

## Driving Theory for Belgium Made Simple



Figure 14 Rectangular information boards

- In the example, the left photo shows information board that provides information on the lane one may choose depending on the destination. The information board on the right indicates that this is a one-way street.

### 1.8. Under plates

- These are usually blue or white plates placed below the traffic board.
- These plates provide extra information on the traffic board.



Figure 15 Under plates

- The example shows photo explaining under plates – the photo has a blue underplate which indicates the maximum duration allowed for parking and the white plate indicates that parking is allowed before and after the traffic sign.

## Introduction to traffic boards

### 1.9. Traffic boards summary

- Traffic boards are of six categories – warning boards, priority boards, obligatory boards, prohibition boards, parking boards, and information boards.
- Traffic boards are usually placed on the right (sometimes above the lane, for example on motorways) except the obligatory round blue board which is placed where it is best visible.



Figure 16 This A1 warning board indicates that you are approaching a dangerous left turn. The road user must adjust his speed.



Figure 17 This A3 warning board indicates that you are approaching a dangerous downhill, the percentage on the board indicates the degree of descent

#### Warning boards

- Indicate danger situation, these are usually triangle shaped with red border.
- These boards are usually placed 150 meters before the actual danger.



Figure 18 This B15 traffic board is placed in the immediate vicinity of the place where the driver has priority. The horizontal line indicates the intersecting side road that should give you priority. In this case the side street comes from the right.



Figure 19 This B17 traffic board is placed in the immediate vicinity of an intersection where the priority of right applies.

#### Priority boards

- Indicates who has priority at the next junction.
- These are usually triangle shaped with red border pointing upwards.



Figure 20 This D1 board is an obligation to follow the direction indicated by the arrow – at next junction to turn right compulsorily.



Figure 21 This D10 obligation board indicates the part of the public road that must be used by pedestrians and cyclists.

#### Obligatory boards

- These boards must compulsorily be followed.
- These are usually blue round boards.



Figure 22 This C5 prohibition board indicates no entry for drivers of motor vehicles with more than two wheels.



Figure 23 This E1 prohibition board indicates that you are not allowed to park here. The prohibition applies to the side of the road

#### Prohibitor boards

- These boards indicate prohibitions (things that are not allowed).
- These are usually round boards with red border or full red boards or red border boards with blue background.

# Driving Theory for Belgium Made Simple

where it is placed, up to the next intersection.



Figure 24 This E9 parking disc traffic board indicates that the parking time is limited and that you must place a parking disc clearly visible in your vehicle.



Figure 25 This E9 traffic board indicates that you must park on the elevated verge or on the sidewalk.

## Parking boards

- These boards indicate places where parking is allowed and for whom.
- These are usually rectangular blue boards.



Figure 26 This F5 information road board indicates that this is the beginning or entrance of a motorway.



Figure 27 This F13 information traffic board shows arrows on the roadway to help you choose the right lane.

## Information boards

These boards provide useful information, usually rectangular blue boards.

**STOP 150m**

Figure 28 This blue under plate board indicates the distance of 150 meters at which you must stop and give priority.

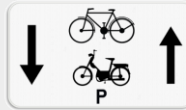


Figure 29 This M17 white underplate board indicates that cyclists and speed pedelecs have an exception and are allowed to ride in two directions on the road.

## Under plates

- These are blue or white plates placed under traffic board.
- These provide more specific information related to the traffic board above it.

## Practice questions

1. Which type of traffic sign prohibits you from doing something?



Board C3



Board B1



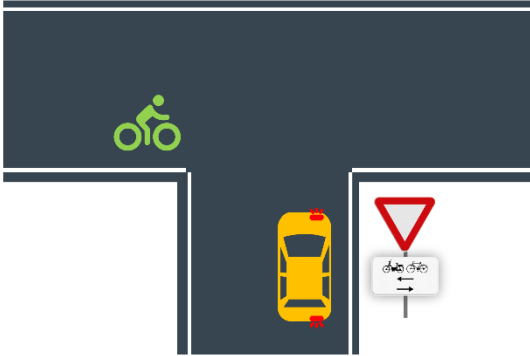
Board A51

## Introduction to traffic boards

---

- C3
- A51
- A1

2. You are driving this yellow car. At this place



- you must give priority to cyclists and mopeds from both directions.
- it is a warning board where you must beware of cyclists and mopeds coming from both directions.
- it is a prohibition board prohibiting you to enter the road ahead.

3. This traffic sign indicates that a dangerous downhill of 8% follows.



- Correct
- Wrong

4. The topmost triangle board indicates that 150 meters further



- there is a prohibition for drivers to enter the road.
- there is a warning for level crossing with barriers.
- there is a train station indicated by this information board.

5. This road sign means



- warning for a moveable bridge.
- information for a moveable bridge.
- some kind of prohibition for the traffic.

6. Is a car allowed to come out of this street?

## Introduction to traffic boards

---



- No
- Yes

7. You are driving this yellow car. Are you allowed to drive into this street on your right?



- Yes – this board does not prohibit entry.
- No – this board prohibits entry.

8. This warning board indicating traffic lights ahead is placed



- 150 meters before the actual traffic lights.
- 100 meters before the actual traffic lights.
- 200 meters before the actual traffic lights.

### Answers and explanation

1. Which type of traffic sign prohibits you from doing something?
  - C3

Prohibition signs are always round and have a red border.

2. You are driving this yellow car. At this place
  - you must give priority to cyclists and mopeds from both directions.

it is a warning board where you must beware of cyclists and mopeds coming from both directions.

it is a prohibition board prohibiting you to enter the road ahead.

The sign is a priority sign and it means that you must give way and that you must stop if necessary.

3. This traffic sign indicates that a dangerous downhill of 8% follows.
  - Wrong

## Introduction to traffic boards

---

This is a warning board indicating a steep uphill of 8%. Always read the traffic signs from the left to right and from bottom to top.

4. The topmost triangle board indicates that 150 meters further
  - there is a warning for level crossing with barriers.

A triangle board is a warning board indicating here a level crossing with barriers.

5. This road sign means
  - warning for a moveable bridge.

This traffic sign is a warning sign indicating at 150 meters further there is a movable bridge.

6. Is a car allowed to come out of this street?
  - Yes

This is a prohibited direction of travel for every driver. So no driver is allowed to enter the street. Vehicles can drive out of the street. The white bottom sign indicates to whom traffic in both directions is permitted.

7. You are driving this yellow car. Are you allowed to drive into this street on your right?
  - Yes – this board does not prohibit entry.

This is a traffic sign related to parking and only imposes a parking ban.

8. This warning board indicating traffic lights ahead is placed
  - 150 meters before the actual traffic lights.

This traffic sign indicates a warning for traffic lights. The blue plate below indicates the distance at which this warning applies. If there is no blue plate then by default the warning applies at 150 meters ahead.

### Want to practice more questions?

Practice more questions through our website <https://www.drivingtheory.be/>

As alcohol consumption increases, your reaction time will lengthen.

2. What do you do if alcohol self-test indicates that you have had too much of alcohol?
  - I don't drive myself, but I am looking for an alternative to get to my destination.

Drinking coffee or water, eating greasy food or other substances are myths. It won't make you sober any faster. It is best to look for an alternative to get around. This could be by taxi or public transport, riding with someone else or possibly staying overnight on location.

3. You can call hands-free while you drive. Are you more at risk of an accident than a driver who does not call?
  - Yes

Drivers are not allowed to use, hold, or operate mobile devices with screens while driving, unless the device is securely attached to the vehicle. For instance, you cannot make a call at a red traffic light because your vehicle is not considered stationary or parked, even though it is stopped. While hands-free calling is permitted, it can still be a distraction.

4. If you are caught driving under the influence of drugs, you will receive
  - 12 hour driving ban.

The check is done with a saliva test. If this is positive, you will receive an immediate driving ban of 12 hours.

5. With alcohol intoxication of 0.22 mg/l UAL or 0.5 promille
  - you will be banned from driving for 3 hours.

It's illegal to drive if you blow 0.22 mg per liter of exhaled air or 0.5 promille in your blood, which results in a minimum three-hour driving ban. The penalties increase if you blow 0.35 mg per liter or 0.8 promille, leading to at least a six-hour ban.

---

## Index

- age requirements, 25
- alcohol content, 197
- Alcohol influence, 197
- Alternate parking, 170
- appointment, 26
- Arrows, 52
- Authorized persons, 46
- Bicycle lane, 57
- Bicycle street, 140
- Blue circular board, 32
- blue flashing lights, 101
- Blue parking disk, 177
- Braking and stopping distance, 154
- Breath analysis, 197
- Central reservation, 105
- Checkerboard marking, 58
- Circular board with red border, 32
- cost, 26
- Cross roads, 75
- Crossing guard, 97
- Crossing of vehicles, 75
- Crosspoint, 75
- Cruise control, 209
- Dangerous goods, 203
- delayed theory exam, 27
- documents, 26
- Documents on board, 200
- Double overtaking, 148
- drivers, 95
- Drugs and alcohol, 197
- elevated verge, 93
- English, 25
- Entering and exiting roundabout, 82
- Evacuation light, 53
- Exit lane on motorway, 136
- Fog lights, 205
- Footpath, 107
- Green traffic light, 51
- Group of pedestrians, 96
- Hazard lights, 166
- Hierarchy of priority, 46
- High XE "Low beam lights" XE "Fog lights" beam lights, 205
- horizontal arms, 47
- Information boards, 37
- Junction, 75
- Lane reduction arrows, 114
- Learners license, 200
- Level crossing, 108
- Level crossing with barriers, 108
- Level crossing without barriers, 109
- level verge, 94
- Level-crossing lights, 56
- List of special places, 138
- Load protruding, 203
- Low beam lights, 205
- Low emission zone (LEZ), 210
- Mandatory to keep in Light Motor Vehicle (LMV), 198
- manoeuvre*, 53
- Manoeuvres, 76
- Maximum and minimum speeds on motorway, 134
- minimum age, 25
- Mud roads, 103
- Obligatory boards, 35
- Offences, 211
- Orange light, 50
- Overtaking, 145
- Parking, 166
- Parking boards, 36
- parking lane, 94
- Parts of public road, 105

- Path, 103
- pedestrian crossing, 57, 110
- Pedestrian crossing, 110
- Pedestrian zone, 143
- pedestrians, 92
- Play street, 144
- Pre-sorting lanes, 59
- Priority boards, 34
- Priority from right, 61
- Priority road, 60
- Priority vehicles, 101
- Prohibition, 32
- Prohibition boards, 36
- Promille, 197
- Provisional license, 200
- Public and private terrain, 118
- Public road, 102
- raising one arm, 47
- reaction time, 154
- Rear lights, 205
- Recidivism, 213
- rectangular, 33
- Rectangular blue boards, 33
- red traffic light, 50
- Reflective safety vest, 198
- Rescue lane, 117
- Reserved bus lane, 112, 113
- Reserved roads, 141
- Residential area, 142
- Right of way, 61
- road captain, 98
- Road hump, 141
- road shoulder, 95
- round shaped lights, 50
- Round-about, 81
- Rush hour lane on motorway, 137
- School bus, 101
- School street, 144
- Seat belts, 198
- shark teeth, 34
- sidewalk, 107
- SMOG, 211
- Speed limits in built-up area, 131
- Speed limits on expressways, 138
- Speed limits on motorway, 133
- Speed limits outside built-up area, 132
- stop traffic board, 34
- Stopping space for bicycles and mopeds, 58
- Street, 103
- Suggestion lane, 107
- Towing, 204
- Traffic boards, 30
- Traffic islands, 107
- Traffic lights, 49
- Tram and bus lights, 55
- translation, 27
- triangle shaped with red border, 33
- Turning left, 78
- Turning right, 77
- Types of public roads, 103
- Under plates, 38
- Vehicle lights, 205
- Vehicle tires, 206
- Violations, 211
- Waiting, 166
- Waiting and parking, 166
- Warning boards, 33
- Warning indicators, 166
- Warning triangle, 199
- Zebra crossing, 110
- Ziping, 154
- Zone 30, 139